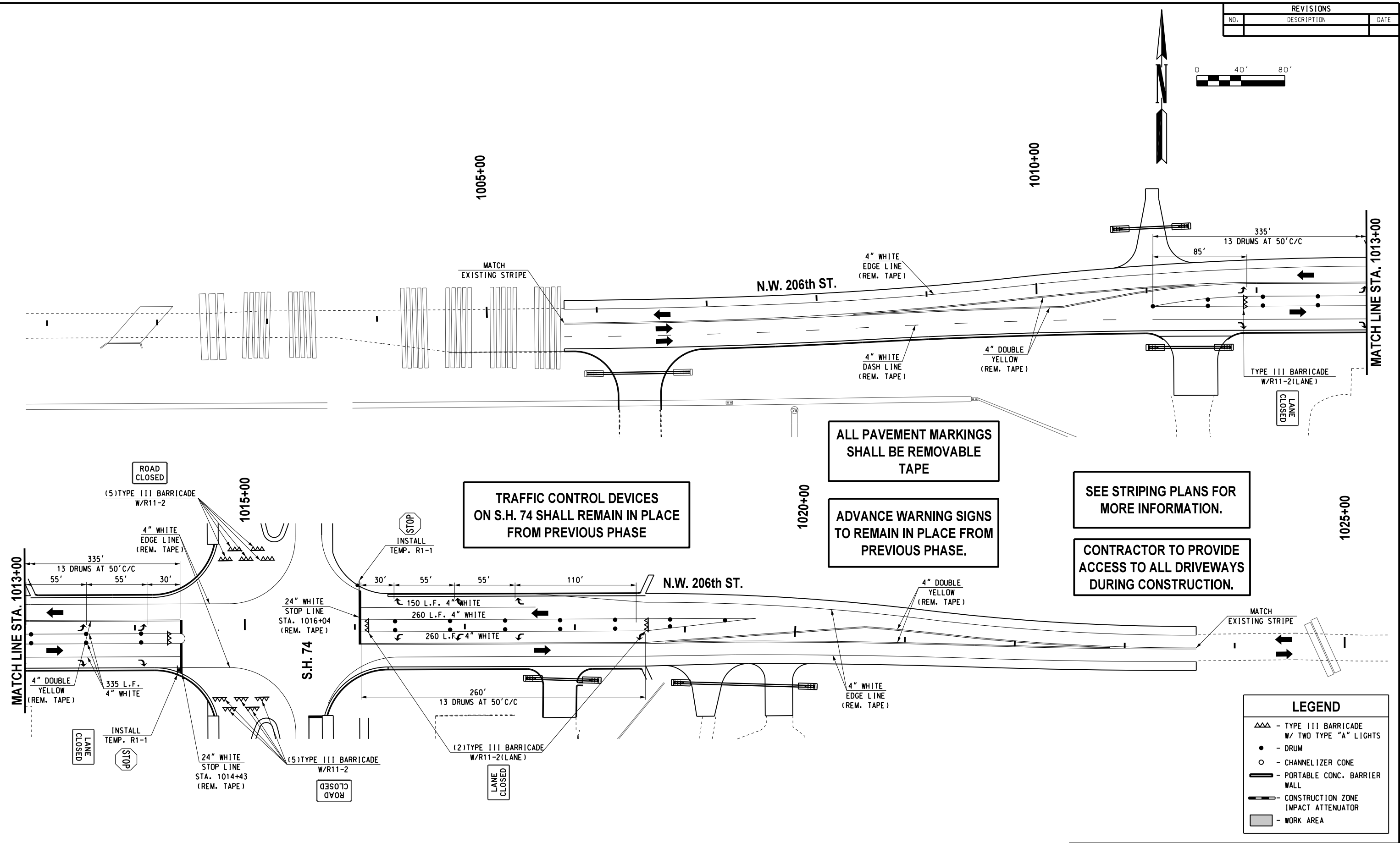
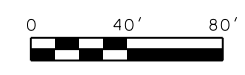


REVISIONS		
NO.	DESCRIPTION	DATE



ALL PAVEMENT MARKINGS SHALL BE REMOVABLE TAPE

ADVANCE WARNING SIGNS TO REMAIN IN PLACE FROM PREVIOUS PHASE.

SEE STRIPING PLANS FOR MORE INFORMATION.

CONTRACTOR TO PROVIDE ACCESS TO ALL DRIVEWAYS DURING CONSTRUCTION.

TRAFFIC CONTROL DEVICES ON S.H. 74 SHALL REMAIN IN PLACE FROM PREVIOUS PHASE

LEGEND	
△△	- TYPE III BARRICADE W/ TWO TYPE "A" LIGHTS
●	- DRUM
○	- CHANNELIZER CONE
▬	- PORTABLE CONC. BARRIER WALL
▬▬	- CONSTRUCTION ZONE IMPACT ATTENUATOR
■	- WORK AREA

Design	RWR	08/10/17
Drawn	GDB	08/10/17



**TRAFFIC CONTROL
PHASE 4E
N.W. 206th ST.**

State Job No. 14964(08) Sheet No. T100

OKLAHOMA COUNTY

08/10/17 G:\Projects\T-16628 SH 74 @ NW 178th, NW 192nd & NW 206th\CAD\TC PHASE 4E\NW 206TH.dgn